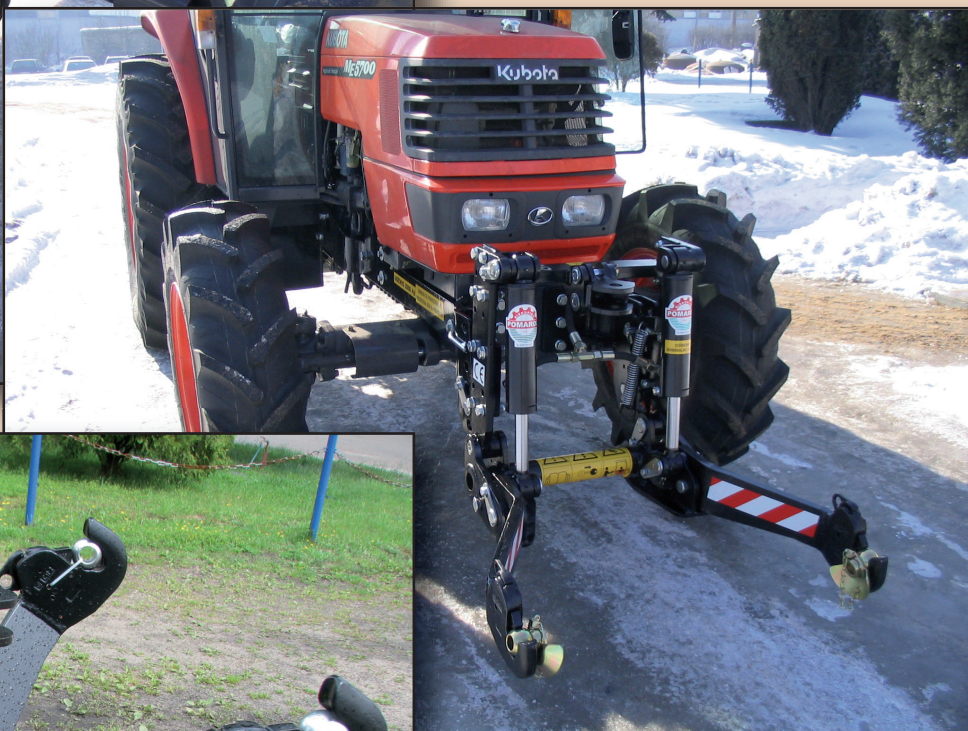
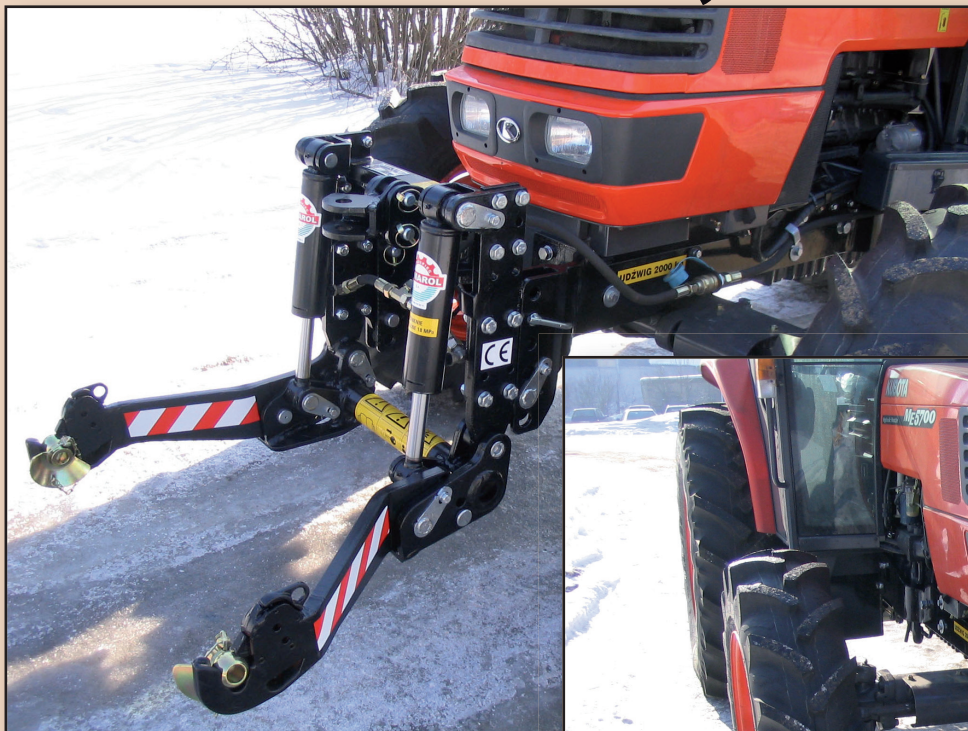


FRONT HYDRAULIC LIFT / THREE POINT LINKAGE T 200, T 200/1



PRZEDSIĘBIORSTWO PRODUKCYJNO-USŁUGOWO-HANDLOWE

POMAROL S.A.

11-300 Biskupiec ul. Przemysłowa 4

tel. +48 89 715-20-71; fax +48 89 715-20-73, 715-26-78

www.pomarol.com.pl e-mail: sprzedaz@pomarol.com.pl

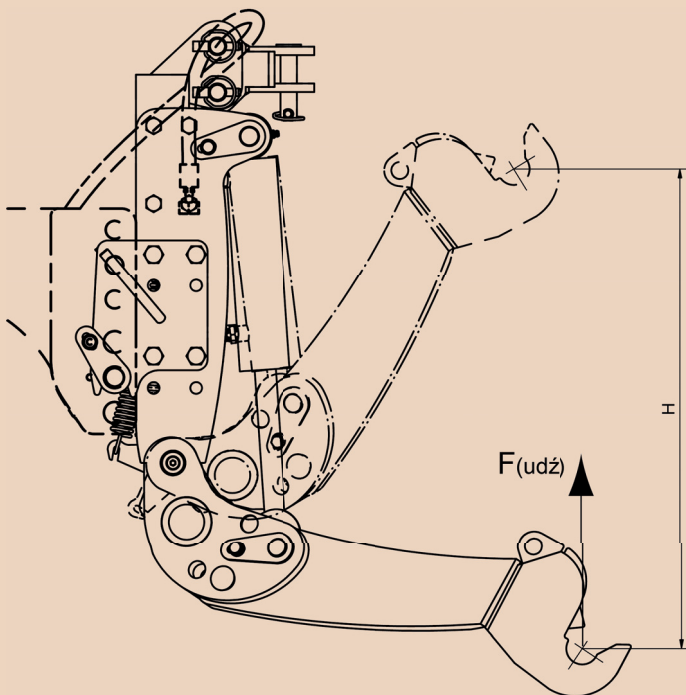
FRONT HYDRAULIC LIFT / THREE POINT LINKAGE T 200, T 200/1

Hydraulic lift consists of arms and the frame to be mounted in the front of the tractor.
Arms, spaced in compliance with the II category, are hooked on two double-acting hydraulic servo-motors, which allow lifting and lowering of tools.
The lifting power is 2 tons or 4 tons and it depends on the type and model of the lift.
The front hydraulic lift can be mounted on many tractor models and makes.
The list can be obtained from the manufacturer of the front hydraulic lift.

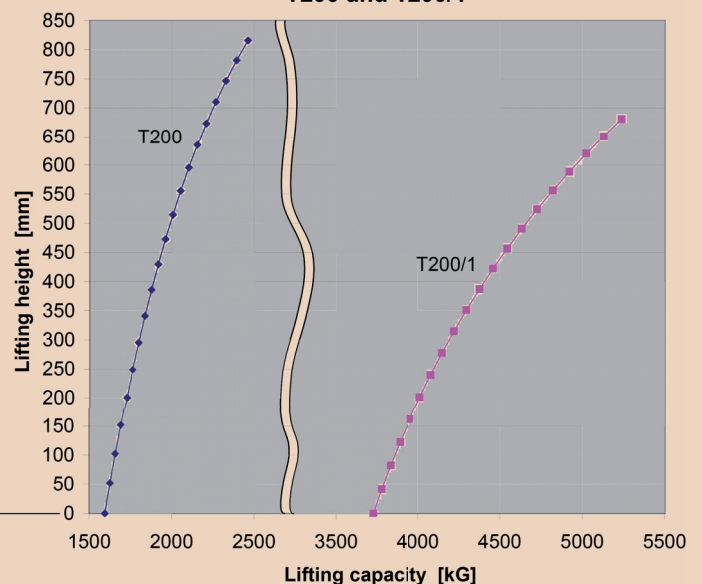
Hydraulic lift type	T200	T200/1
Weight of the front hydraulic lift	220 kg	235 kg
Hydraulic cylinder diameter	60 mm	80 mm
Hydraulic cylinder stroke	190 mm	
Max. oil pressure during pump work	12 MPa	
Nominal pressure in the hydraulic system	18 MPa	
Number of operators	1 person	
Lifting capacity	2000 kg*	4000 kg*
Usable lifting height	0,82 m	0,68 m

*Maximum lifting capacity depends on the use of the counter weight on the back of the tractor.

*Maximum lifting capacity depends on the location of the axle of the gripper (see chart below).



Capacity resolution for front hydraulic lift
T200 and T200/1



PRZEDSIĘBIORSTWO PRODUKCYJNO-USŁUGOWO-HANDLOWE
POMAROL S.A.

11-300 Biskupiec ul. Przemysłowa 4
tel. +48 89 715-20-71; fax +48 89 715-20-73, 715-26-78
www.pomarol.com.pl e-mail: sprzedaz@pomarol.com.pl